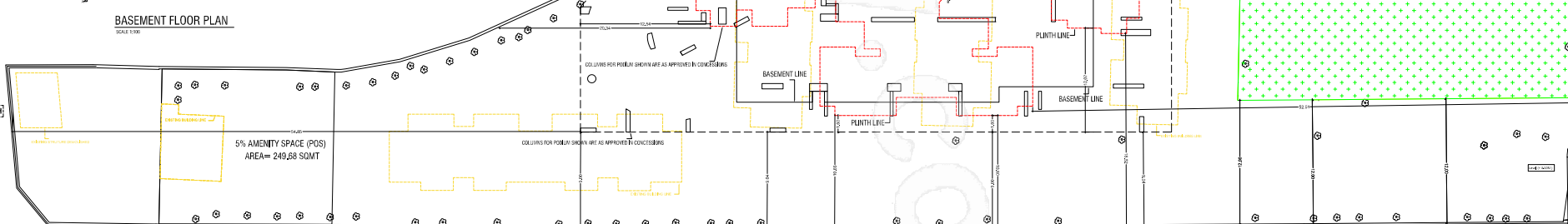
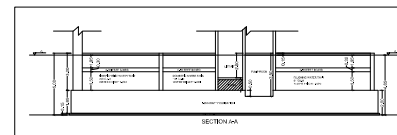
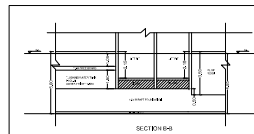
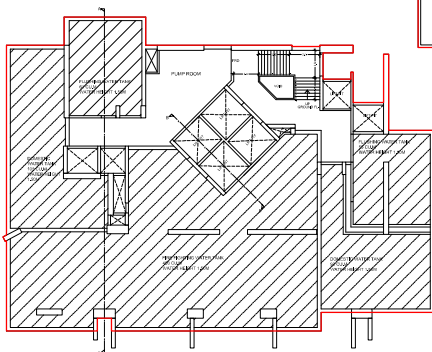


PIST AREA					
1	10.0 x 32.0	x 624	=	1971.1	SQ/MT
2	10.0 x 32.0	x 1260	=	12600	SQ/MT
3	10.0 x 30.0	x 675	=	6750	SQ/MT
4	10.0 x 30.0	x 1260	=	12600	SQ/MT
5	10.0 x 30.0	x 1260	=	12600	SQ/MT
6	10.0 x 12.0	x 2700	=	4050.0	SQ/MT
7	10.0 x 30.0	x 675	=	6750	SQ/MT
8	10.0 x 30.0	x 1260	=	12600	SQ/MT
9	10.0 x 30.0	x 1260	=	12600	SQ/MT
10	10.0 x 30.0	x 1260	=	12600	SQ/MT
11	10.0 x 60.0	x 270	=	2700.0	SQ/MT
12	10.0 x 12.0	x 1725	=	17250	SQ/MT
13	10.0 x 12.0	x 1260	=	12600	SQ/MT
14	10.0 x 60.0	x 270	=	2700.0	SQ/MT
15	10.0 x 60.0	x 1260	=	12600	SQ/MT
16	10.0 x 60.0	x 1260	=	12600	SQ/MT
17	10.0 x 60.0	x 1260	=	12600	SQ/MT
18	10.0 x 60.0	x 1260	=	12600	SQ/MT
19	10.0 x 60.0	x 1260	=	12600	SQ/MT
20	10.0 x 30.0	x 1260	=	12600	SQ/MT
21	10.0 x 30.0	x 1260	=	12600	SQ/MT
22	10.0 x 30.0	x 1260	=	12600	SQ/MT
23	10.0 x 30.0	x 1260	=	12600	SQ/MT
24	10.0 x 30.0	x 1260	=	12600	SQ/MT
25	10.0 x 30.0	x 1260	=	12600	SQ/MT
26	10.0 x 30.0	x 1260	=	12600	SQ/MT
27	10.0 x 30.0	x 1260	=	12600	SQ/MT
28	10.0 x 30.0	x 1260	=	12600	SQ/MT
29	10.0 x 30.0	x 1260	=	12600	SQ/MT
30	10.0 x 30.0	x 1260	=	12600	SQ/MT
31	10.0 x 30.0	x 1260	=	12600	SQ/MT
32	10.0 x 30.0	x 1260	=	12600	SQ/MT
33	10.0 x 30.0	x 1260	=	12600	SQ/MT
34	10.0 x 30.0	x 1260	=	12600	SQ/MT
35	10.0 x 30.0	x 1260	=	12600	SQ/MT
36	10.0 x 30.0	x 1260	=	12600	SQ/MT
37	10.0 x 30.0	x 1260	=	12600	SQ/MT
38	10.0 x 30.0	x 1260	=	12600	SQ/MT
39	10.0 x 30.0	x 1260	=	12600	SQ/MT
40	10.0 x 30.0	x 1260	=	12600	SQ/MT
41	10.0 x 30.0	x 1260	=	12600	SQ/MT
42	10.0 x 30.0	x 1260	=	12600	SQ/MT
43	10.0 x 30.0	x 1260	=	12600	SQ/MT
44	10.0 x 30.0	x 1260	=	12600	SQ/MT
45	10.0 x 30.0	x 1260	=	12600	SQ/MT
46	10.0 x 30.0	x 1260	=	12600	SQ/MT
47	10.0 x 30.0	x 1260	=	12600	SQ/MT
48	10.0 x 30.0	x 1260	=	12600	SQ/MT
49	10.0 x 30.0	x 1260	=	12600	SQ/MT
50	10.0 x 30.0	x 1260	=	12600	SQ/MT
51	10.0 x 30.0	x 1260	=	12600	SQ/MT
52	10.0 x 30.0	x 1260	=	12600	SQ/MT
53	10.0 x 30.0	x 1260	=	12600	SQ/MT
54	10.0 x 30.0	x 1260	=	12600	SQ/MT
55	10.0 x 30.0	x 1260	=	12600	SQ/MT
56	10.0 x 30.0	x 1260	=	12600	SQ/MT
57	10.0 x 30.0	x 1260	=	12600	SQ/MT
58	10.0 x 30.0	x 1260	=	12600	SQ/MT
59	10.0 x 30.0	x 1260	=	12600	SQ/MT
60	10.0 x 30.0	x 1260	=	12600	SQ/MT
TOTAL ADDITION				=	657276



PROJECT NO.: W-8906000-0007		SHEET NO. 11
PROFORMA		
Municipal Corporation of Greater Mumbai		
STAMP OF APPROVAL OF PLANS		
THIS CIRCULAR APPROVAL TO THE PROPOSED PLANS SANCTIONED UNDER MUMBAI CHARGES (REGULATIONS) ACT, 1908 AND NEW EGM - 2014.		
THE DRAWING SHALL BE READ CAREFULLY IN VIEW OF THE LETTER.		
TO BE OBTAINED FROM THE CONCERNED SET		
SIGNED OFF BY AN DPT.		
THIS PLAN IS DIGITALLY SIGNED AND ISSUED		
ANNO DATE SCALE	AASHTO CHARTER BY AUST	AME PRAKASH B CHARTER
SIGNATURE	SIGNATURE	SIGNATURE

[illegible][illegible]