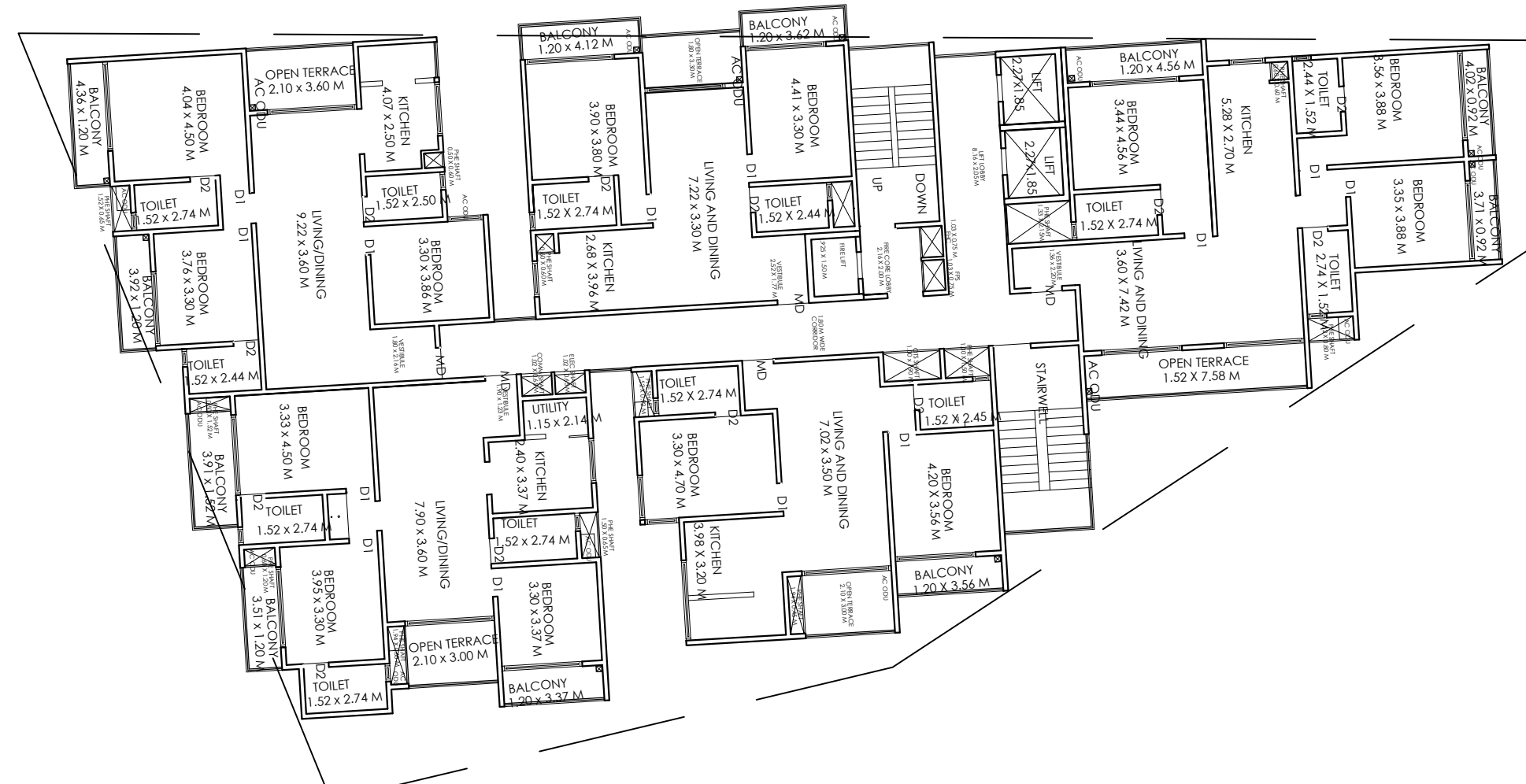


TYPICAL (SECOND, THIRD TO 12 TH )  
FLOOR PLAN  
(SCALE 1:300)



| Firm       | Job Name |          |         |          | Deductions (Am-Sa-M-Fr) |             |      |        | Frequency (Am-Sa-M-Fr) | Total Paid (Am-Sa-M-Fr) | Cash Paid (Am-Sa-M-Fr) |
|------------|----------|----------|---------|----------|-------------------------|-------------|------|--------|------------------------|-------------------------|------------------------|
|            | Total Am | Total Sa | Total M | Total Fr | Union                   | Subcontract | Rent | Permit |                        |                         |                        |
| Reference  | 108.75   | 83.25    | 12.21   | 1.8      | 0.00                    | 0.00        | 0.00 | 0.00   | 0.00                   | 0.00                    | 0.00                   |
| 1st Week   | 2034.8   | 95.54    | 95.56   | 0.00     | 83.22                   | 0.16        | 0.00 | 0.00   | 2720.1                 | 2720.1                  | 0.00                   |
| 2nd Week   | 2034.8   | 95.54    | 95.56   | 0.00     | 83.22                   | 0.16        | 0.00 | 0.00   | 2720.1                 | 2720.1                  | 22.00                  |
| 3rd Week   | 2034.8   | 95.54    | 95.56   | 0.00     | 83.22                   | 0.16        | 0.00 | 0.00   | 2720.1                 | 2720.1                  | 22.00                  |
| 4th Week   | 2034.8   | 95.54    | 95.56   | 0.00     | 83.22                   | 0.16        | 0.00 | 0.00   | 2720.1                 | 2720.1                  | 22.00                  |
| 5th Week   | 2034.8   | 95.54    | 95.56   | 0.00     | 83.22                   | 0.16        | 0.00 | 0.00   | 2720.1                 | 2720.1                  | 22.00                  |
| 6th Week   | 2034.8   | 95.54    | 95.56   | 0.00     | 83.22                   | 0.16        | 0.00 | 0.00   | 2720.1                 | 2720.1                  | 22.00                  |
| 7th Week   | 2034.8   | 95.54    | 95.56   | 0.00     | 83.22                   | 0.16        | 0.00 | 0.00   | 2720.1                 | 2720.1                  | 22.00                  |
| 8th Week   | 2034.8   | 95.54    | 95.56   | 0.00     | 83.22                   | 0.16        | 0.00 | 0.00   | 2720.1                 | 2720.1                  | 22.00                  |
| 9th Week   | 2034.8   | 95.54    | 95.56   | 0.00     | 83.22                   | 0.16        | 0.00 | 0.00   | 2720.1                 | 2720.1                  | 22.00                  |
| 10th Week  | 2034.8   | 95.54    | 95.56   | 0.00     | 83.22                   | 0.16        | 0.00 | 0.00   | 2720.1                 | 2720.1                  | 22.00                  |
| 11th Week  | 2034.8   | 95.54    | 95.56   | 0.00     | 83.22                   | 0.16        | 0.00 | 0.00   | 2720.1                 | 2720.1                  | 22.00                  |
| 12th Week  | 2034.8   | 95.54    | 95.56   | 0.00     | 83.22                   | 0.16        | 0.00 | 0.00   | 2720.1                 | 2720.1                  | 22.00                  |
| 13th Week  | 2034.8   | 95.54    | 95.56   | 0.00     | 83.22                   | 0.16        | 0.00 | 0.00   | 2720.1                 | 2720.1                  | 22.00                  |
| 14th Week  | 2034.8   | 95.54    | 95.56   | 0.00     | 83.22                   | 0.16        | 0.00 | 0.00   | 2720.1                 | 2720.1                  | 22.00                  |
| 15th Week  | 2034.8   | 95.54    | 95.56   | 0.00     | 83.22                   | 0.16        | 0.00 | 0.00   | 2720.1                 | 2720.1                  | 22.00                  |
| 16th Week  | 2034.8   | 95.54    | 95.56   | 0.00     | 83.22                   | 0.16        | 0.00 | 0.00   | 2720.1                 | 2720.1                  | 22.00                  |
| 17th Week  | 2034.8   | 95.54    | 95.56   | 0.00     | 83.22                   | 0.16        | 0.00 | 0.00   | 2720.1                 | 2720.1                  | 22.00                  |
| 18th Week  | 2034.8   | 95.54    | 95.56   | 0.00     | 83.22                   | 0.16        | 0.00 | 0.00   | 2720.1                 | 2720.1                  | 22.00                  |
| 19th Week  | 2034.8   | 95.54    | 95.56   | 0.00     | 83.22                   | 0.16        | 0.00 | 0.00   | 2720.1                 | 2720.1                  | 22.00                  |
| 20th Week  | 2034.8   | 95.54    | 95.56   | 0.00     | 83.22                   | 0.16        | 0.00 | 0.00   | 2720.1                 | 2720.1                  | 22.00                  |
| 21st Week  | 2034.8   | 95.54    | 95.56   | 0.00     | 83.22                   | 0.16        | 0.00 | 0.00   | 2720.1                 | 2720.1                  | 22.00                  |
| 22nd Week  | 2034.8   | 95.54    | 95.56   | 0.00     | 83.22                   | 0.16        | 0.00 | 0.00   | 2720.1                 | 2720.1                  | 22.00                  |
| 23rd Week  | 2034.8   | 95.54    | 95.56   | 0.00     | 83.22                   | 0.16        | 0.00 | 0.00   | 2720.1                 | 2720.1                  | 22.00                  |
| 24th Week  | 2034.8   | 95.54    | 95.56   | 0.00     | 83.22                   | 0.16        | 0.00 | 0.00   | 2720.1                 | 2720.1                  | 22.00                  |
| 25th Week  | 2034.8   | 95.54    | 95.56   | 0.00     | 83.22                   | 0.16        | 0.00 | 0.00   | 2720.1                 | 2720.1                  | 22.00                  |
| 26th Week  | 2034.8   | 95.54    | 95.56   | 0.00     | 83.22                   | 0.16        | 0.00 | 0.00   | 2720.1                 | 2720.1                  | 22.00                  |
| 27th Week  | 2034.8   | 95.54    | 95.56   | 0.00     | 83.22                   | 0.16        | 0.00 | 0.00   | 2720.1                 | 2720.1                  | 22.00                  |
| 28th Week  | 2034.8   | 95.54    | 95.56   | 0.00     | 83.22                   | 0.16        | 0.00 | 0.00   | 2720.1                 | 2720.1                  | 22.00                  |
| 29th Week  | 2034.8   | 95.54    | 95.56   | 0.00     | 83.22                   | 0.16        | 0.00 | 0.00   | 2720.1                 | 2720.1                  | 22.00                  |
| 30th Week  | 2034.8   | 95.54    | 95.56   | 0.00     | 83.22                   | 0.16        | 0.00 | 0.00   | 2720.1                 | 2720.1                  | 22.00                  |
| 31st Week  | 2034.8   | 95.54    | 95.56   | 0.00     | 83.22                   | 0.16        | 0.00 | 0.00   | 2720.1                 | 2720.1                  | 22.00                  |
| 32nd Week  | 2034.8   | 95.54    | 95.56   | 0.00     | 83.22                   | 0.16        | 0.00 | 0.00   | 2720.1                 | 2720.1                  | 22.00                  |
| 33rd Week  | 2034.8   | 95.54    | 95.56   | 0.00     | 83.22                   | 0.16        | 0.00 | 0.00   | 2720.1                 | 2720.1                  | 22.00                  |
| 34th Week  | 2034.8   | 95.54    | 95.56   | 0.00     | 83.22                   | 0.16        | 0.00 | 0.00   | 2720.1                 | 2720.1                  | 22.00                  |
| 35th Week  | 2034.8   | 95.54    | 95.56   | 0.00     | 83.22                   | 0.16        | 0.00 | 0.00   | 2720.1                 | 2720.1                  | 22.00                  |
| 36th Week  | 2034.8   | 95.54    | 95.56   | 0.00     | 83.22                   | 0.16        | 0.00 | 0.00   | 2720.1                 | 2720.1                  | 22.00                  |
| 37th Week  | 2034.8   | 95.54    | 95.56   | 0.00     | 83.22                   | 0.16        | 0.00 | 0.00   | 2720.1                 | 2720.1                  | 22.00                  |
| 38th Week  | 2034.8   | 95.54    | 95.56   | 0.00     | 83.22                   | 0.16        | 0.00 | 0.00   | 2720.1                 | 2720.1                  | 22.00                  |
| 39th Week  | 2034.8   | 95.54    | 95.56   | 0.00     | 83.22                   | 0.16        | 0.00 | 0.00   | 2720.1                 | 2720.1                  | 22.00                  |
| 40th Week  | 2034.8   | 95.54    | 95.56   | 0.00     | 83.22                   | 0.16        | 0.00 | 0.00   | 2720.1                 | 2720.1                  | 22.00                  |
| 41st Week  | 2034.8   | 95.54    | 95.56   | 0.00     | 83.22                   | 0.16        | 0.00 | 0.00   | 2720.1                 | 2720.1                  | 22.00                  |
| 42nd Week  | 2034.8   | 95.54    | 95.56   | 0.00     | 83.22                   | 0.16        | 0.00 | 0.00   | 2720.1                 | 2720.1                  | 22.00                  |
| 43rd Week  | 2034.8   | 95.54    | 95.56   | 0.00     | 83.22                   | 0.16        | 0.00 | 0.00   | 2720.1                 | 2720.1                  | 22.00                  |
| 44th Week  | 2034.8   | 95.54    | 95.56   | 0.00     | 83.22                   | 0.16        | 0.00 | 0.00   | 2720.1                 | 2720.1                  | 22.00                  |
| 45th Week  | 2034.8   | 95.54    | 95.56   | 0.00     | 83.22                   | 0.16        | 0.00 | 0.00   | 2720.1                 | 2720.1                  | 22.00                  |
| 46th Week  | 2034.8   | 95.54    | 95.56   | 0.00     | 83.22                   | 0.16        | 0.00 | 0.00   | 2720.1                 | 2720.1                  | 22.00                  |
| 47th Week  | 2034.8   | 95.54    | 95.56   | 0.00     | 83.22                   | 0.16        | 0.00 | 0.00   | 2720.1                 | 2720.1                  | 22.00                  |
| 48th Week  | 2034.8   | 95.54    | 95.56   | 0.00     | 83.22                   | 0.16        | 0.00 | 0.00   | 2720.1                 | 2720.1                  | 22.00                  |
| 49th Week  | 2034.8   | 95.54    | 95.56   | 0.00     | 83.22                   | 0.16        | 0.00 | 0.00   | 2720.1                 | 2720.1                  | 22.00                  |
| 50th Week  | 2034.8   | 95.54    | 95.56   | 0.00     | 83.22                   | 0.16        | 0.00 | 0.00   | 2720.1                 | 2720.1                  | 22.00                  |
| 51st Week  | 2034.8   | 95.54    | 95.56   | 0.00     | 83.22                   | 0.16        | 0.00 | 0.00   | 2720.1                 | 2720.1                  | 22.00                  |
| 52nd Week  | 2034.8   | 95.54    | 95.56   | 0.00     | 83.22                   | 0.16        | 0.00 | 0.00   | 2720.1                 | 2720.1                  | 22.00                  |
| 53rd Week  | 2034.8   | 95.54    | 95.56   | 0.00     | 83.22                   | 0.16        | 0.00 | 0.00   | 2720.1                 | 2720.1                  | 22.00                  |
| 54th Week  | 2034.8   | 95.54    | 95.56   | 0.00     | 83.22                   | 0.16        | 0.00 | 0.00   | 2720.1                 | 2720.1                  | 22.00                  |
| 55th Week  | 2034.8   | 95.54    | 95.56   | 0.00     | 83.22                   | 0.16        | 0.00 | 0.00   | 2720.1                 | 2720.1                  | 22.00                  |
| 56th Week  | 2034.8   | 95.54    | 95.56   | 0.00     | 83.22                   | 0.16        | 0.00 | 0.00   | 2720.1                 | 2720.1                  | 22.00                  |
| 57th Week  | 2034.8   | 95.54    | 95.56   | 0.00     | 83.22                   | 0.16        | 0.00 | 0.00   | 2720.1                 | 2720.1                  | 22.00                  |
| 58th Week  | 2034.8   | 95.54    | 95.56   | 0.00     | 83.22                   | 0.16        | 0.00 | 0.00   | 2720.1                 | 2720.1                  | 22.00                  |
| 59th Week  | 2034.8   | 95.54    | 95.56   | 0.00     | 83.22                   | 0.16        | 0.00 | 0.00   | 2720.1                 | 2720.1                  | 22.00                  |
| 60th Week  | 2034.8   | 95.54    | 95.56   | 0.00     | 83.22                   | 0.16        | 0.00 | 0.00   | 2720.1                 | 2720.1                  | 22.00                  |
| 61st Week  | 2034.8   | 95.54    | 95.56   | 0.00     | 83.22                   | 0.16        | 0.00 | 0.00   | 2720.1                 | 2720.1                  | 22.00                  |
| 62nd Week  | 2034.8   | 95.54    | 95.56   | 0.00     | 83.22                   | 0.16        | 0.00 | 0.00   | 2720.1                 | 2720.1                  | 22.00                  |
| 63rd Week  | 2034.8   | 95.54    | 95.56   | 0.00     | 83.22                   | 0.16        | 0.00 | 0.00   | 2720.1                 | 2720.1                  | 22.00                  |
| 64th Week  | 2034.8   | 95.54    | 95.56   | 0.00     | 83.22                   | 0.16        | 0.00 | 0.00   | 2720.1                 | 2720.1                  | 22.00                  |
| 65th Week  | 2034.8   | 95.54    | 95.56   | 0.00     | 83.22                   | 0.16        | 0.00 | 0.00   | 2720.1                 | 2720.1                  | 22.00                  |
| 66th Week  | 2034.8   | 95.54    | 95.56   | 0.00     | 83.22                   | 0.16        | 0.00 | 0.00   | 2720.1                 | 2720.1                  | 22.00                  |
| 67th Week  | 2034.8   | 95.54    | 95.56   | 0.00     | 83.22                   | 0.16        | 0.00 | 0.00   | 2720.1                 | 2720.1                  | 22.00                  |
| 68th Week  | 2034.8   | 95.54    | 95.56   | 0.00     | 83.22                   | 0.16        | 0.00 | 0.00   | 2720.1                 | 2720.1                  | 22.00                  |
| 69th Week  | 2034.8   | 95.54    | 95.56   | 0.00     | 83.22                   | 0.16        | 0.00 | 0.00   | 2720.1                 | 2720.1                  | 22.00                  |
| 70th Week  | 2034.8   | 95.54    | 95.56   | 0.00     | 83.22                   | 0.16        | 0.00 | 0.00   | 2720.1                 | 2720.1                  | 22.00                  |
| 71st Week  | 2034.8   | 95.54    | 95.56   | 0.00     | 83.22                   | 0.16        | 0.00 | 0.00   | 2720.1                 | 2720.1                  | 22.00                  |
| 72nd Week  | 2034.8   | 95.54    | 95.56   | 0.00     | 83.22                   | 0.16        | 0.00 | 0.00   | 2720.1                 | 2720.1                  | 22.00                  |
| 73rd Week  | 2034.8   | 95.54    | 95.56   | 0.00     | 83.22                   | 0.16        | 0.00 | 0.00   | 2720.1                 | 2720.1                  | 22.00                  |
| 74th Week  | 2034.8   | 95.54    | 95.56   | 0.00     | 83.22                   | 0.16        | 0.00 | 0.00   | 2720.1                 | 2720.1                  | 22.00                  |
| 75th Week  | 2034.8   | 95.54    | 95.56   | 0.00     | 83.22                   | 0.16        | 0.00 | 0.00   | 2720.1                 | 2720.1                  | 22.00                  |
| 76th Week  | 2034.8   | 95.54    | 95.56   | 0.00     | 83.22                   | 0.16        | 0.00 | 0.00   | 2720.1                 | 2720.1                  | 22.00                  |
| 77th Week  | 2034.8   | 95.54    | 95.56   | 0.00     | 83.22                   | 0.16        | 0.00 | 0.00   | 2720.1                 | 2720.1                  | 22.00                  |
| 78th Week  | 2034.8   | 95.54    | 95.56   | 0.00     | 83.22                   | 0.16        | 0.00 | 0.00   | 2720.1                 | 2720.1                  | 22.00                  |
| 79th Week  | 2034.8   | 95.54    | 95.56   | 0.00     | 83.22                   | 0.16        | 0.00 | 0.00   | 2720.1                 | 2720.1                  | 22.00                  |
| 80th Week  | 2034.8   | 95.54    | 95.56   | 0.00     | 83.22                   | 0.16        | 0.00 | 0.00   | 2720.1                 | 2720.1                  | 22.00                  |
| 81st Week  | 2034.8   | 95.54    | 95.56   | 0.00     | 83.22                   | 0.16        | 0.00 | 0.00   | 2720.1                 | 2720.1                  | 22.00                  |
| 82nd Week  | 2034.8   | 95.54    | 95.56   | 0.00     | 83.22                   | 0.16        | 0.00 | 0.00   | 2720.1                 | 2720.1                  | 22.00                  |
| 83rd Week  | 2034.8   | 95.54    | 95.56   | 0.00     | 83.22                   | 0.16        | 0.00 | 0.00   | 2720.1                 | 2720.1                  | 22.00                  |
| 84th Week  | 2034.8   | 95.54    | 95.56   | 0.00     | 83.22                   | 0.16        | 0.00 | 0.00   | 2720.1                 | 2720.1                  | 22.00                  |
| 85th Week  | 2034.8   | 95.54    | 95.56   | 0.00     | 83.22                   | 0.16        | 0.00 | 0.00   | 2720.1                 | 2720.1                  | 22.00                  |
| 86th Week  | 2034.8   | 95.54    | 95.56   | 0.00     | 83.22                   | 0.16        | 0.00 | 0.00   | 2720.1                 | 2720.1                  | 22.00                  |
| 87th Week  | 2034.8   | 95.54    | 95.56   | 0.00     | 83.22                   | 0.16        | 0.00 | 0.00   | 2720.1                 | 2720.1                  | 22.00                  |
| 88th Week  | 2034.8   | 95.54    | 95.56   | 0.00     | 83.22                   | 0.16        | 0.00 | 0.00   | 2720.1                 | 2720.1                  | 22.00                  |
| 89th Week  | 2034.8   | 95.54    | 95.56   | 0.00     | 83.22                   | 0.16        | 0.00 | 0.00   | 2720.1                 | 2720.1                  | 22.00                  |
| 90th Week  | 2034.8   | 95.54    | 95.56   | 0.00     | 83.22                   | 0.16        | 0.00 | 0.00   | 2720.1                 | 2720.1                  | 22.00                  |
| 91st Week  | 2034.8   | 95.54    | 95.56   | 0.00     | 83.22                   | 0.16        | 0.00 | 0.00   | 2720.1                 | 2720.1                  | 22.00                  |
| 92nd Week  | 2034.8   | 95.54    | 95.56   | 0.00     | 83.22                   | 0.16        | 0.00 | 0.00   | 2720.1                 | 2720.1                  | 22.00                  |
| 93rd Week  | 2034.8   | 95.54    | 95.56   | 0.00     | 83.22                   | 0.16        | 0.00 | 0.00   | 2720.1                 | 2720.1                  | 22.00                  |
| 94th Week  | 2034.8   | 95.54    | 95.56   | 0.00     | 83.22                   | 0.16        | 0.00 | 0.00   | 2720.1                 | 2720.1                  | 22.00                  |
| 95th Week  | 2034.8   | 95.54    | 95.56   | 0.00     | 83.22                   | 0.16        | 0.00 | 0.00   | 2720.1                 | 2720.1                  | 22.00                  |
| 96th Week  | 2034.8   | 95.54    | 95.56   | 0.00     | 83.22                   | 0.16        | 0.00 | 0.00   | 2720.1                 | 2720.1                  | 22.00                  |
| 97th Week  | 2034.8   | 95.54    | 95.56   | 0.00     | 83.22                   | 0.16        | 0.00 | 0.00   | 2720.1                 | 2720.1                  | 22.00                  |
| 98th Week  | 2034.8   | 95.54    | 95.56   | 0.00     | 83.22                   | 0.16        | 0.00 | 0.00   | 2720.1                 | 2720.1                  | 22.00                  |
| 99th Week  | 2034.8   | 95.54    | 95.56   | 0.00     | 83.22                   | 0.16        | 0.00 | 0.00   | 2720.1                 | 2720.1                  | 22.00                  |
| 100th Week | 2034.8   | 95.54    | 95.56   | 0.00     | 83                      |             |      |        |                        |                         |                        |

| Block Name  | Type        | Sub/Use   | Area (Sq. ft.) | Units |       | Car        |       |       |
|-------------|-------------|-----------|----------------|-------|-------|------------|-------|-------|
|             |             |           |                | Rsgd. | Prop. | Rsgd./Unit | Rsgd. | Prop. |
| 40 (BLOCKA) | Residential | Apartment | 50 - 225       | 1     | -     | 1          | 274   | -     |
| 40 (BLOCKB) | Residential | Apartment | 50 - 225       | 1     | -     | 1          | 63    | -     |
| Total       |             |           | -              | -     | -     | -          | 337   | 594   |

| Vehicle Type          | Report |                | Achieved |                 |
|-----------------------|--------|----------------|----------|-----------------|
|                       | No.    | Area (Sq.mt.)  | No.      | Area (Sq.mt.)   |
| Car                   | 337    | 6633.75        | 994      | 8187.56         |
| Visitor's Car Parking | 35     | 491.25         | 0        | 0.00            |
| Total Car             | 372    | 5115.00        | 994      | 8187.56         |
| Two/ Wheeler          | -      | -              | 0        | 0.00            |
| Other Parking         | -      | -              | -        | 9999.90         |
| <b>TOTAL</b>          |        | <b>6696.25</b> |          | <b>18084.16</b> |

| FAR & Tenement Details |                     |                                       |                             |          |                 |         |               |        |          | Pn<br>FAR<br>[S] |
|------------------------|---------------------|---------------------------------------|-----------------------------|----------|-----------------|---------|---------------|--------|----------|------------------|
| Block                  | No. of<br>Same Bldg | Total<br>Built Up<br>Area<br>(Sq.ft.) | Deductions (Area in Sq.ft.) |          |                 |         |               |        |          |                  |
|                        |                     |                                       | Stair/Case                  | Lift     | Lift<br>Machine | Void    | Sub-Structure | Ramp   | Parking  |                  |
| A0<br>(BLOCKA)         | 1                   | 9647.32                               | 1481.61                     | 671.47   | 2.89            | 1167.19 | 2.08          | 971.56 | 17001.96 | 34               |
| A0<br>(BLOCKB)         | 1                   | 9331.30                               | 015.91                      | 146.90   | 11.30           | 296.95  | 2.08          | 0.00   | 0.00     | 8                |
| Roof                   |                     | 23360.25                              | 12350.00                    | 12350.00 |                 |         |               |        | 23360.25 |                  |

| II. NOC Details |                                  |   |   |
|-----------------|----------------------------------|---|---|
| Sl. No.         | Name of the Statutory Department | Reference No. & Date                          | Conditions imposed  |
| 1               | Fire Force Department            | KSFSE/ OBC 11/024 dt- 16-03-2019              | All the conditions imposed in the letter issued by the Statutory Body should be adhered to. |
| 2               | Airport Authority of India / KIA | BANG / SOUTH/BI/11317 / 255694 dt- 14-12-2017 |   |
| 3               | SEIAA                            | SEIAA - 10 / CON - 2019 dt- 29-04-2019        |   |

| B.I.F.FE DETAILS  |                          |               |
|---|--------------------------|---------------|
| The Applicant has paid the fee vide Receipt No.: BBNP008018/CH/21 Dated: 26-08-2021. The following: |                          |               |
| Sl. No.   | Details                  |               |
| 1   | Licence Fees (20%)       | 2965085       |
| 2   | Sundry Fee               | 4184          |
| 3   | Batterment Fees for Site | 368808        |
| 4   | For Building             | 131824        |
| 5   | Security Deposit (25%)   | 1547770       |
| 6   | Plan Copies              | 8000          |
| 7   | Compound Wall            | 10000         |
| 8   | Lake Improvement Charges | 338891        |
| TOTAL - I   |                          | 10348765      |
| Say Rs.   |                          | 1,03,48,000/- |

(One Crore Three Lakh Forty-eight Thousand Only)

The Applicant has paid Rs. 1000/-  
 Vide Receipt No. HC/5299/2021, RTGS  
 UTR No. IDIB421235271, dated: 31-08-2021

OWNER / CPA HOLDER'S  
SIGNATURE

OWNER'S ADDRESS WITH ID  
NUMBER & CONTACT NUMBER  
MIS DHARIMAL LIFESPACES PVT.LTD. R  
PRAKASH RASHIKAL DHARIMAL HARAL

ARCHITECT/ENGINEER  
/SUPERVISOR 'S SIGNATURE  
JYOTHI J NO 113, BENKANE NALAYANEAR SHANTHINIKATHAN  
KANNADA MEDUM SCHOOL MUNESHWARA BLOCK  
BCCBL 3yfe-166716-15  
Date: \_\_\_\_\_

PROJECT TITLE :  
PLAN SHOWING THE PROPOSED RESIDENTIAL APARTMENT  
BUILDING AT KATHA NO- 20/154/154/1/542, HARALKURTE  
VILLAGE, WARD NO-174, ROMMANAHALLI 1701N, RANGHORE

PROJECT TITLE :  
PLAN SHOWING THE PROPOSED RESIDENTIAL APARTMENT  
BUILDING AT KHATHA NO- 82B16A/154/1542, HARALKUNTE  
VILLAGE WARD NO-174, BOMMANAHALLI ZONE, BANGALORE

DRAWING TITLE : BLOCK A - 28F+GF12UF  
BLOCK B - GF+12UF

This approval of Building plan/ Modified plan is valid for two years from the date of issue of plan and building licence by the competent authority.



